

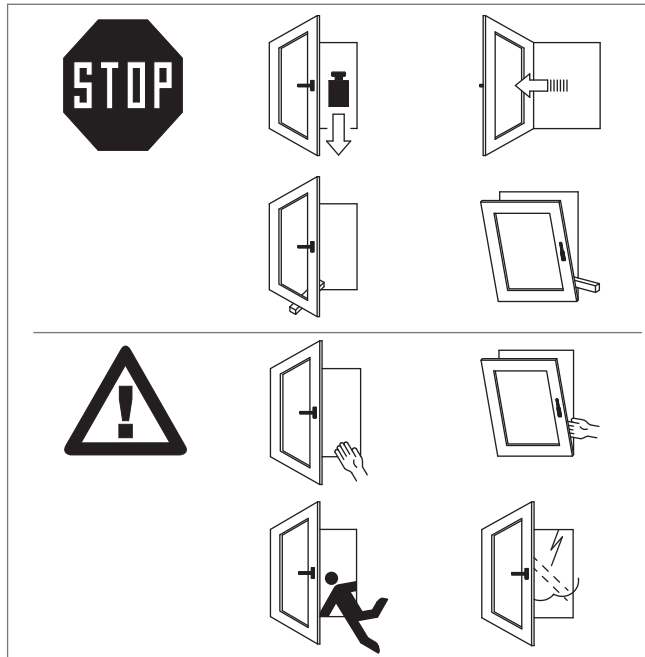
**GU** Information regarding dangers, omissions and operation

In order to avoid damage to your window, please take note of the following advice:

- Do not put any additional load on the sash
- Do not turn the sash against the wall beyond the point of resistance
- Do not jam the sash by placing an object between sash and frame

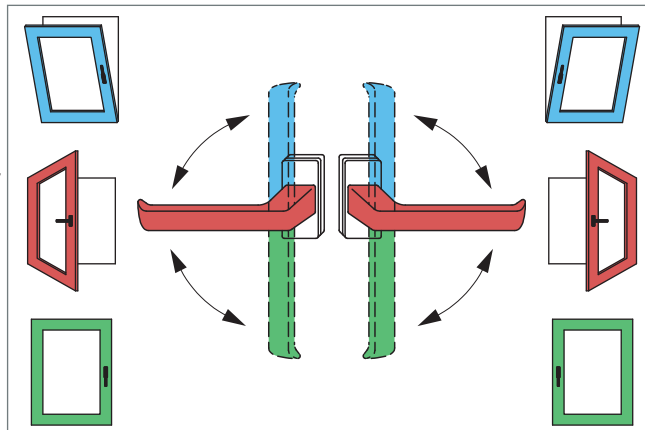
In order to prevent accidents be aware of the following hazards:

- Risk of getting crushed between frame and sash
- Risk of falling out of the open window
- Risk of injury by sash swinging open through a gust of wind



How to operate a Tilt&Turn window (Meaning of symbols)

- green: sash closed
- blue: sash in tilt position for ventilation
- red: sash in Turn-Only position for cleaning or inrush airing



**Attention:**  
In order to prevent hazards it is necessary that sashes in Turn-Only position be held or secured.

**Maintain your window's warranty!**

In order to maintain the warranty on the window hardware it is imperative that the advice on maintenance, care and hazard prevention be observed.

Adhesive label with operating symbols available on request.

**GU** Appropriate operation, maintenance and care of windows



Address / Your Window Service

---



---



---



You have acquired a window fitted with high-quality Tilt&Turn hardware from Gretsch-Unitas.

Like every other building element, a window is subject to normal wear.

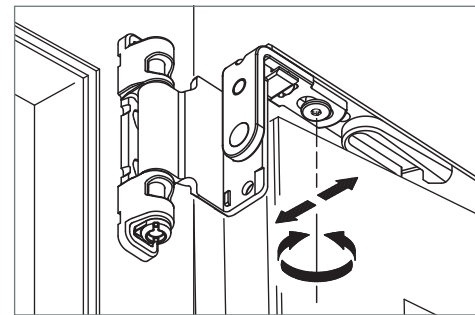
The smooth and easy movement of the window hardware and the service life of the window largely depend on regular maintenance and care.

The user should carry out the following maintenance work on his windows and balcony-doors at least once a year:

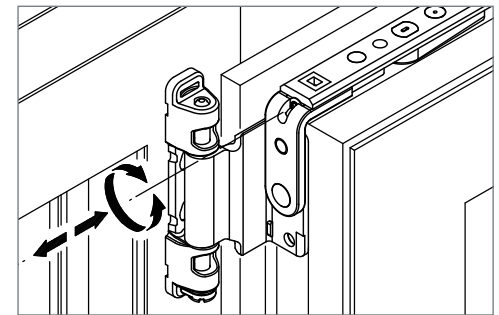
- ☰ Operational check and lubrication of all moving parts and locking points.
- + Retightening of handle fixing screws (handle rosette must be removed carefully)

**We recommend to conclude a service contract**

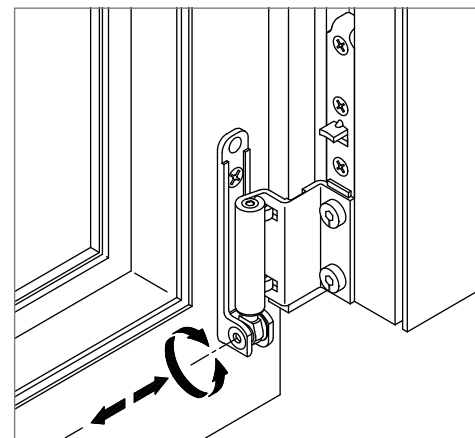
When problems appear such that a safe function of the window is no longer guaranteed, please call in your window specialist without delay.



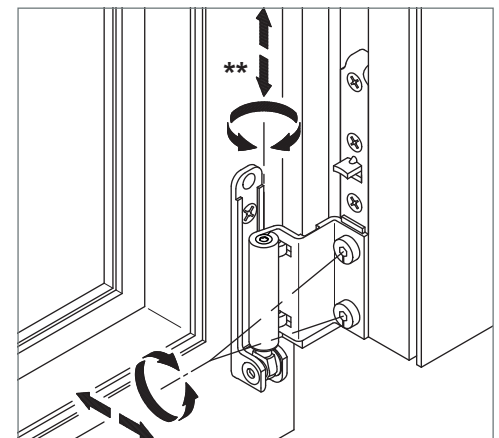
Adjusting the gasket pressure on the stay-arm



Horizontal sash adjustment on the stay-arm



Horizontal sash adjustment on the pivot-rest



Lifting the sash, adjusting the gasket pressure



Adjusting the gasket pressure on the locking cam

We recommend that the window finish and glazing be regularly checked over and damage made good.

The gasket must not be painted over or cleaned with aggressive agents.

**Ask your window fabricator to undertake the adjustments, if required. \***

(\*) Adjustment tool = Torx 15 screwdriver or Allen key size 4 (\*\*)